

The logo for Florida State University, featuring the letters 'FSW' in a stylized, purple, serif font with a white outline. The letters are stacked vertically, with 'F' on top, 'S' in the middle, and 'W' on the bottom. The logo is set against a dark background and has a reflection effect below it.

SCHOOL OF EDUCATION

Teacher Preparation
Accelerated Learning Pathways
Collegiate Charter High Schools

Fall 2018 Advisory Board Meeting
September 26, 2018
4:00-5:00 p.m.
Agenda

- I. Individual Introductions
- II. School of Education Overview
- III. Subcommittee Break Out Sessions
- IV. Subcommittee Break Out Sharing
- V. Adjournment

Purpose & Objectives

The Advisory Board's purpose is to strengthen the academic programs it serves. The Board exists to advise, assist, support, and advocate for the FSW School of Education programs and priorities.

Advisory Board Objectives:

- To bring expertise and a professional network to support the SoE as needed.
- To gain an understanding of the successes of the FSW School of Education and to speak knowledgeably about the SoE to community stakeholders.
- To help the SOE see barriers (e.g., legislative, political, fiscal, etc.) and partnership opportunities (e.g., philanthropic, research, and programmatic) not initially apparent to SoE leadership.



- Introductions
- Think-Pair-Share

What issue or development in the community should the School of Education address in the next 6-12 months?





THIS IS US

The School of Education serves more than 4,000 students each year!

- Two teacher preparation programs
- Two collegiate charter high schools
- Accelerated pathways program



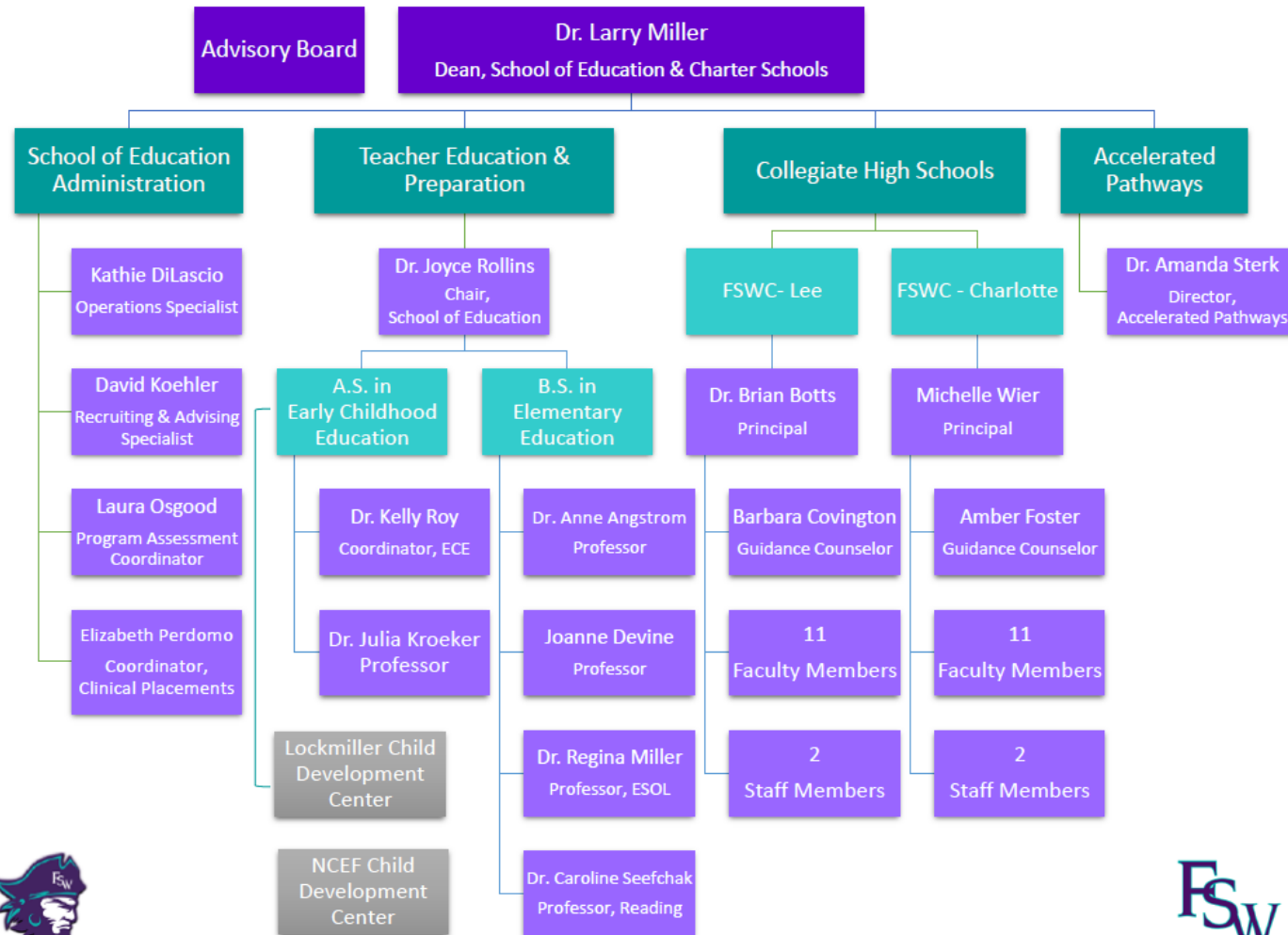
BS Elementary Education Graduates



Student Engagement - Phonic Pong

School of Education Organizational Chart

Florida SouthWestern State College
2018-2019 SCHOOL OF EDUCATION ORGANIZATIONAL CHART





ELEM ED CELEBRATIONS

100% of FSW School of Education Teacher Candidates Receive Job Offers for Four Consecutive Semesters

May 2018 Grads



Producing High Impact Teachers

8% of high
impact
teachers in
Lee County
are FSW
SoE graduates



 **19** FSW SCHOOL OF ED
GRADS RECOGNIZED AS
"HIGH IMPACT TEACHERS"
by the Florida Department of Education

90% STILL TEACHING IN SWFL!

To learn more about our teacher preparation programs, contact David Koehler at dkoehler@fsw.edu or by phone at (239) 489.9369.



**FLORIDA
SOUTHWESTERN
STATE COLLEGE**
SCHOOL OF EDUCATION

Field Experience



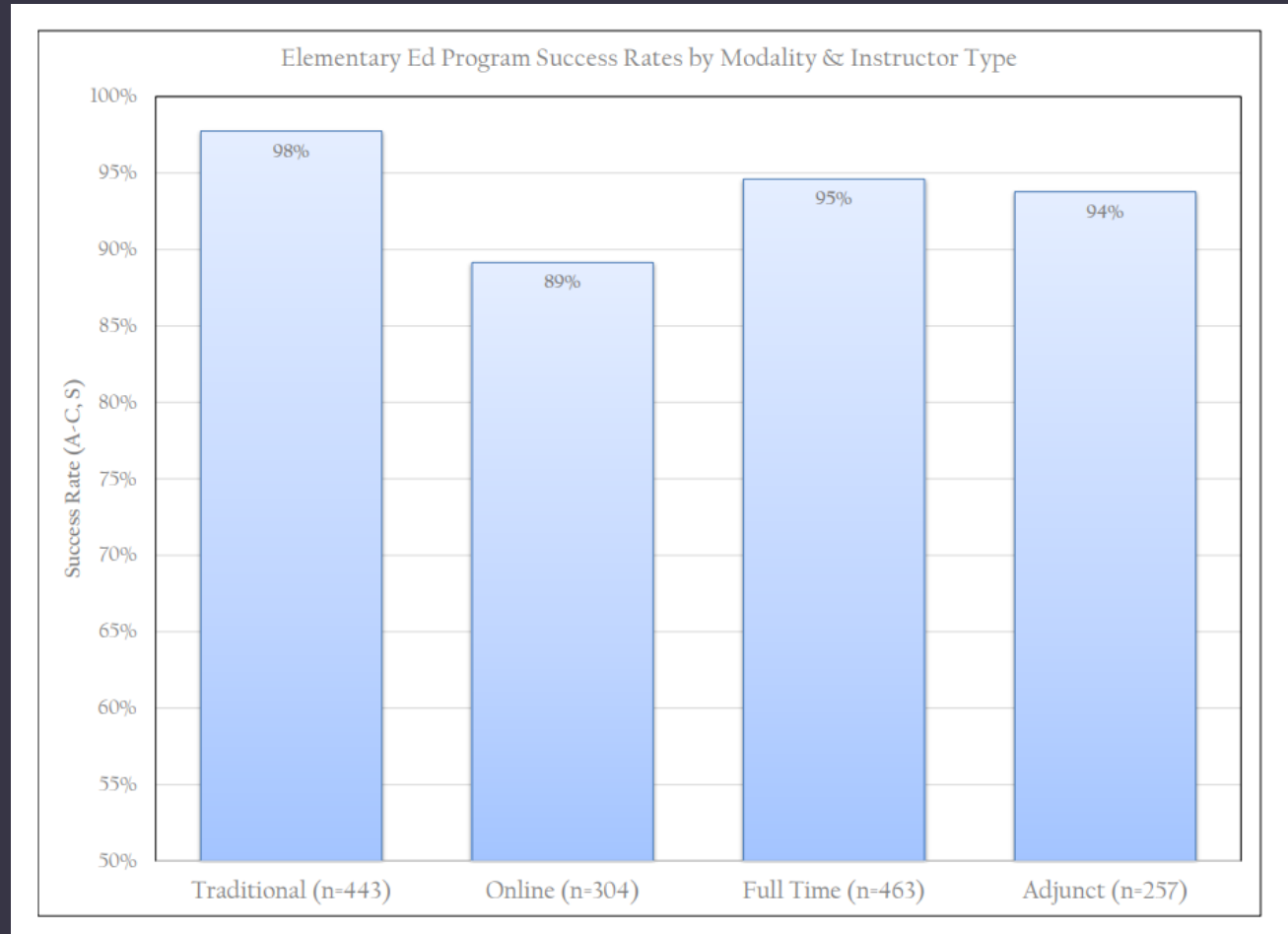
- Recruited, trained and managed 447 cooperating teachers across our five county service area
- Students have at least 685 hours of field experience by the time they graduate.
- Helping Cooperating Teachers become "FSW Qualified"

SIBME Launch

SIBME (Seeing is Believing Me) is an instructional coaching and collaboration program for our clinical education students.



BS Elementary Ed: Student Success Rates





CONTINUOUS IMPROVEMENT

TPI Inspection



Successfully completed state inspection process in March of 2018, culminating in a 5-year extension on our state approval.



Quality of Selection Addresses the program's responsibility to select candidates that show potential to become successful teachers.



Quality of Content Knowledge and Teaching Methods Focuses on how well the program ensures teacher candidates acquire content knowledge and key teaching methods and skills needed to be an effective educator.



Quality of Clinical Placement, Feedback, and Candidate Performance Analyzes the key elements of the final clinical experience in which candidates must apply the knowledge acquired through the program.



Quality of Program Performance Management Examines whether and how program leadership—at all levels—utilize data to continually improve the quality of teacher preparation and outcomes for all teacher candidates.

State Improvement Plan Goals

#1

100% of School of Education students who successfully complete their final internship will demonstrate classroom knowledge in the field, as evidenced by receiving a normed, valid, and reliable rating of 3 (Fulfilled) on 85% of the Observation Tool Indicators, by May 2019.

Addresses judgement area 4: Quality of program performance management

#2

100% of Cooperating Teachers will meet the requirements to be FSW endorsed by Fall of 2019.

Addresses judgement area 3: Quality of clinical placement, feedback and candidate performance



#3

Faculty Developed Instructional Goal

100% of final interns will be able to articulate the differentiated ESOL and ESE strategies they used in a recorded lesson, as measured by a performance assessment showing applied practice driven by theories learned in class, by June of 2019.

Addresses judgement area 2: Quality of content knowledge and teaching skills

Effectiveness Plan Goals



- In the process of writing goals for 2018-2019 for all School of Education programs
- Goals for the BS Elem Ed program are aligned with the State Improvement Plan goals

Program Accreditation

We are seeking national accreditation for the Elementary Education program (CAEP) and Accelerated Pathways (NACEP).

- Planned to attend CAEP Conference in Washington D.C. September 11-14, we postponed until next Fall due to Hurricane Florence
- Beginning self study process





EARLY CHILDHOOD CELEBRATIONS

Early Childhood Education

- Dr. Kelly Roy and Dean Larry Miller served on the statewide curriculum committee to redevelop the Associate of Science in Early Childhood Education curriculum framework.
- Students in our program expressed their gratitude in words and photos to the Richard M. Schulze Family Foundation for providing \$150,000 in academic scholarships. Scholarship recipients completed 30% more credits and held a higher GPA than their peers who did not receive the scholarship.
- Developed an AS to BS articulation agreement with State College of Florida

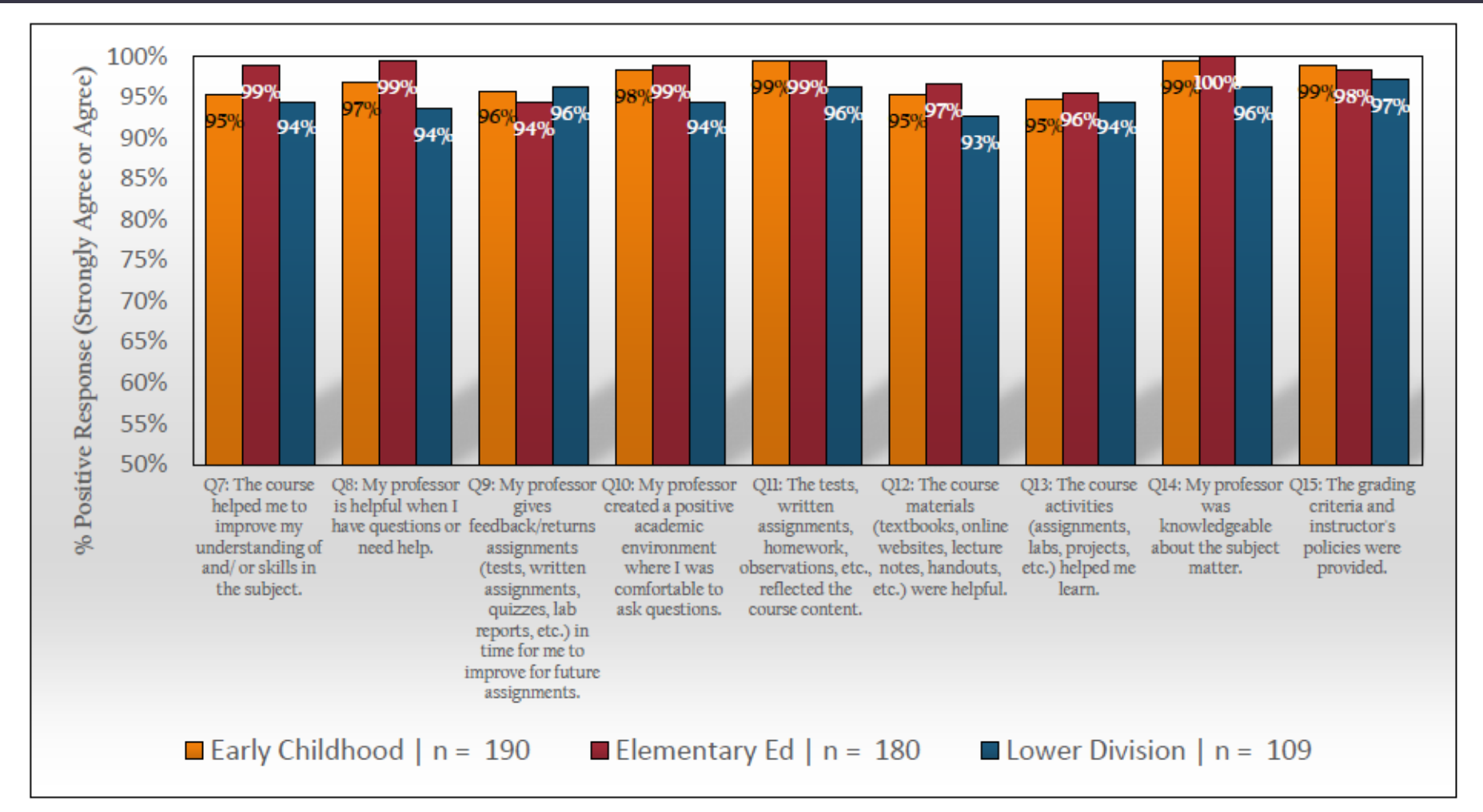



On Site Advising



David Koehler, Recruiting and Advising Specialist

School of Ed Student Satisfaction





ACCELERATED
PATHWAYS
CELEBRATIONS

Accelerated Learning Pathways

3 Pathways

- Early Admittance
- Dual Enrollment
- Collegiate High Schools and Institutes



Opened FSW's first Collegiate Institute at Clewiston High School
100% earned a C or higher
in every course!



Articulation Agreements

Collaborated with district partners to consolidate 10 separate one-year dual enrollment, early admission, and collegiate institute articulation agreements into 5 bi-annual agreements



Accelerated Pathways Highlights

- 93% success rate (C or higher in college coursework)
- 3.38 Average college GPA
- 9% of Accelerated Pathway students earned an AA degree = 181 students
- Average tuition cost savings to families \$905.00
- Over 87 sections of concurrent dual enrollment program, taught by 45 instructors.



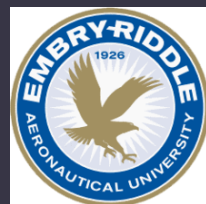
COLLEGIATE
HIGH SCHOOL
CELEBRATIONS

Collegiate High School Grads Earn Over \$9 Million in Scholarships



The Class of 2018 at Florida SouthWestern Collegiate High School – Lee, collectively earned over \$7.1M in scholarships. Charlotte county grades earned over \$2M. Additionally, over 70 percent of the graduates had already earned their Associate in Arts degree from Florida SouthWestern State College.

Some of the universities and colleges these graduates will be attending include...



Collegiate High School Highlights

- FSWC-Lee is tied for #1 high school in the state*
- FSWC-Charlotte ranked #4 high school in the state*
- Richard M. Schulze Family Foundation awarded a \$30,000 grant to FSWC-Lee for STEM education (2 year total of \$57,500) used to purchase equipment and supplies for our Engineering Lab.
- Bronze Metal by US News and World Report (highest possible rank unless AP tests are administered at our schools)
- FLDOE School of Excellence
- One National Merit Finalist transferred to Princeton University



*preliminary, based on percent of possible tests given





UPCOMING EVENTS



Kappa Delta Epsilon



 **AUTISM SPEAKS®**
WALK *powered by love™*
SPONSORED BY ALPHA XI DELTA

Southwest Florida
Saturday October 6th

Kappa Delta Epsilon - FSW

FSW

Family Math Night



Thursday, October 18th from 5:30-7:30 p.m.
FSW Campus Building U Room 102



Pop Up Play



It's a **PARTY** in a box!

FSW's School of Education, in collaboration with Pop-Up Adventure Play, presents:

Pop-Up Play

Everyone is welcome!
Saturday, November 10th 2018
1:00 until 4:00 PM (Rain or Shine)

Florida SouthWestern State College
Thomas Edison Campus Practice Field
Lockmillier Child Care Center
FSW Lane, Fort Myers

Contact Popupplay.fsw@gmail.com to register

<https://popupadventureplaygrounds.wordpress.com/welcome/free-resources/amazing-benefits-of-play/>

Florida SouthWestern State College, an equal access institution, prohibits discrimination in its employment, programs and activities based on race, sex, gender, age, color, religion, national origin, ethnicity, disability, pregnancy, sexual orientation, marital status, genetic information or veteran's status. The College is an equal access/equal opportunity institution. Questions pertaining to educational equity, equal access, or equal opportunity should be addressed to Title IX Coordinator/Equity Officer, 8099 College Parkway, Fort Myers, Florida 33919, equity@fsw.edu, 239.489.9051 or to the Assistant Secretary for Civil Rights, United States Department of Education.

