

## Agenda 4pm to 5pm

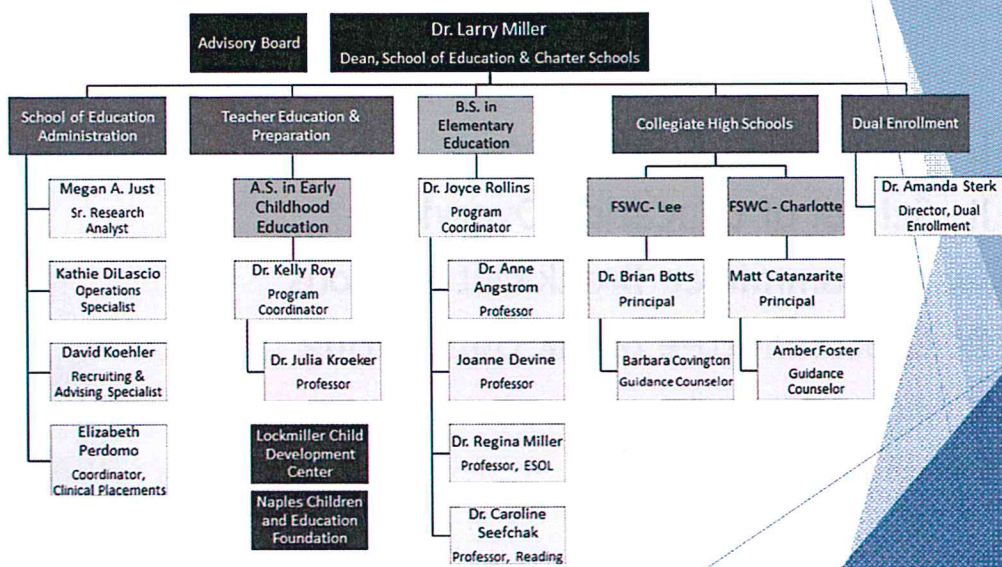
- ▶ I. Individual Introductions
- ▶ II. School of Education Overview
- ▶ III. Subcommittee Break Out Sessions
- ▶ IV. Subcommittee Break Out Sharing
- ▶ V. Adjournment



## Purpose & Objectives

- ▶ The Advisory Board's purpose is to strengthen the academic programs it serves. The Board exists to advise, assist, support, and advocate for the FSW School of Education programs and priorities.
- ▶ Advisory Board Objectives
  - ▶ To bring expertise and a professional network to support the SOE as needed.
  - ▶ To gain an understanding of the successes of the FSW School of Education and to speak knowledgeably about the SOE to community stakeholders.
  - ▶ To help the SOE see risks (e.g., legislative, political, fiscal, etc.) and partnership opportunities (e.g., philanthropic, research, and programmatic) not initially apparent to SOE leadership.

## School of Education Organizational Chart





## School of Education Organization Matrix

School of Ed Staffing Matrix		Academic Programs				Accelerated Learning	FSW Collegiate Charter High Schools		
Function	Staff	Lower Division	Early Childhood	Baccalaureate Education	Alt Cert	District-Wide	Lee	Charlotte	Collier*
Index #									
Field Experience	Uz Perdomo	•	•	•	•	•			
Advising & Recruiting	Amber Foster-Vassie						•		
	David Koehler	•	•		•	•			
	Barbara Covington						•		•
Research, Reporting & Special Projects	Megan Just	•	•	•	•	•	•	•	•
Operations	Lisa Betz						•		
	Dinu Buzan						•		
	Kathie DiLasco	•	•	•	•	•	•	•	•
	Karen Hathaway							•	
	Maria Parrillo							•	
	Lisandra Taylor							•	•
	Sorileidy Zaragoza							•	
Leadership	Brian Scott						•		•
	Matt Calanzanite							•	•
	Amanda Sterk						•		•
	Larry Miller	•	•	•	•	•	•	•	•
	Regina Miller								
	Joyce Rollins	•			•				
	Kelly Roy		•						
	Caroline Seefchak			•					
Student Headcount		600	150	150	100	3,000	400	400	400*
Full-Time Faculty		-	2	6	-	-	11	11	11*
Adjunct Faculty		10	8	20			-	-	-

\*Anticipated enrollments and staffing capacity upon opening of program or unit. LST = Learning Sciences and Technology. Adding a link to IR website for up-to-date numbers.

2016-2017 School of Education Faculty & Staff Professional Responsibilities Matrix



### School of Education Academic Programs

Dean	FSW Committee(s) Membership	SOE Leadership		Community Service	Professional Organizations
		Program Support	Course Leads		
Dr. Larry Miller	Credit Review Academic Research Council (ARC) Institutional Review Board (IRB) Research Ad Hoc Committee Textbook Trends	FLDOE 5 County Superintendents Charter School Governing Board		Future Ready Collier FutureMakers Leadership Florida	International Association for K-12 Online Learning (iACOLU) Florida Association of Colleges of Teacher Education (FACTE)
Dr. Anne Angstrom	Curriculum Textbook Affordability	Service Learning (supporting role to G. Miller, Coordinator)	EDF 3214 EDG 4935 ESE 4323 LAE 3332 LAE 3333 LAE 4454 LAE 4940	Collier County School District Volunteer	Florida Association of Colleges of Teacher Education (FACTE) National Council of Teachers of English (NCTE) Assembly for Literature for Adolescents (ALAN)
Joanne Devine	Professional Development	Family Math Night (supporting role to M. Robertson)	EDF 2585	SEE Ambassadors	National Education Association (NEA) Massachusetts Retired Teacher Association (MRTA) National Council for Teachers of Mathematics (NCTM) International Reading Association (IRA) Massachusetts Reading Association (MRA) New England League of Middle Schools (NELMS)
Dr. Julie Ruppel	Learning/Academic Technology	Pop-up Play		Immokalee Technical College Advisory Board for SDS Early Learning Coalition Program	National Association for the Education of Young Children (NAEYC) The Association for the Study of Play (TASP)



## Actively Engaged Faculty

	FSW Committee(s) Membership	SOE Leadership	Course Lead	Community Service	Professional Organizations	
Dr. Regina Miller	Academic Standards	ESOL Endorsement Coordinator Service Learning Coordinator	EEX 3012 EME 2040 TSL 4080 TSL 4140	Lee County Golden Apple Teacher Selection Committee	WIDA for Teacher Education Sanibel Leadership Conference	
Dr. Joyce Rollins	Commencement Rank & Promotion Graduation AdHoc Textbook Affordability	KDE Advisor Service Learning FLDOE FFMT Contact	EDE 4220 EDE 4223 EDE4940 EDE 4226C EDE4304C	EDF 4782 EDG 3410 EDG 3620 EDG 4004 EEX 3012 SLS 1515	Lee County SD Weekly Guest Teacher	Florida Association of Colleges of Teacher Education (FACTE) National Education Association (NEA)
Dr. Kelly Roy	Gen Ed Advisory Council Textbook Affordability	FCCECN Liaison	CHD 1120 CHD 1134 CHD 1135 CHD 1120 CHD 1332 CHD 2324 EEC 1000	EEC 1202 EEC 1603 EEC 1946 EEC 2521 EEX 1013 HSC 1421	Future Ready Collier – ECE Working Group Steering Committee with Lee/Collier County Early Learning Coalition ECE Work Group	National Association for the Education of Young Children The Association for Childhood Education International
Dr. Caroline Seefchak	Learning Assessment, SOE Assessment Coordinator ARC Review Committee, Chair Library Advisory Council Chair and Coordinator Workgroup/Ad-Hoc Committee	Reading Endorsement Coordinator Reading/Literacy Coordinator	RED 3324 RED 4012 RED 4335 RED 4350 RED 4519 LAE 4416	Expert Network Editorial Service AVID Tutor Volunteers	National Council of Teachers of English (NCTE) International Literacy Association (ILA) Florida Reading Association (FRA) National Association for Developmental Education (NADE) Florida Association of Colleges of Teacher Education (FACTE)	

## and staff!

Staff	FSW Committee(s) Membership	Program Support	Community Service	Professional Organizations
Megan Just	Learning Assessment Committee (LAC) Qualtrics Users Group	FLDOE Liaison	Future Makers- Persistence & Progress	Florida Association of Colleges of Teacher Education (FACTE) American Educational Research Association (AERA) American Psychological Association (APA) Learning & the Brain Society (LBS)
Kathie DiLascio	Association of Florida Colleges (AFC) Student Conduct Board Alumni Association			
David Koehler		Admissions Appeals Committee GKT Prep Course		
Liz Perdomo	Campus Safety Committee			

### FSW Dual Enrollment

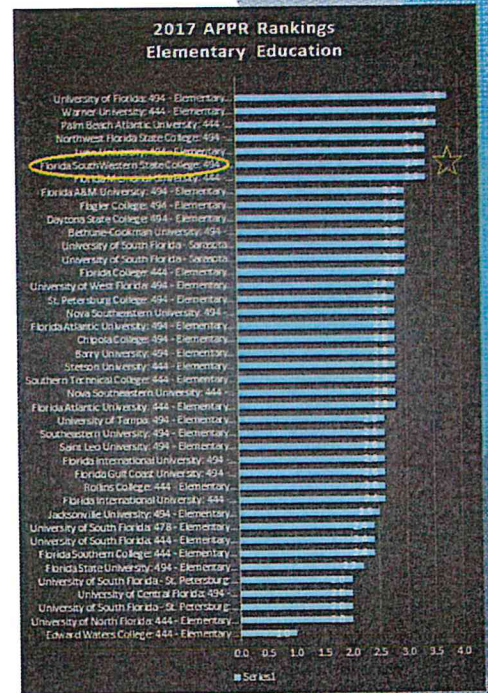
Staff Name	FSW Committee Membership	Community Service	Professional Organizations
Dr. Amanda Sterk	FSW Collegewide Accelerated Learning Committee FSW Textbook Affordability	FutureMakers Future Ready Collier	American School Counselors Association Florida School Counselors Association

### FSW Collegiate High Schools

Staff Name	FSW Committee Membership	External to FSW Service
Brian Botts	Safety Committee at FSW Liaison to The School District of Lee County Support the FSW Board of Governors	ASCD and SACS STEM Accreditation Reviewer Early College Guidance Conference
Matt Catanzarite	Liaison to The School District of Lee County Support the FSW Board of Governors	Early College Guidance Conference

## B.S. in Elementary Education Program Ranked Top in State

- ▶ Top Ranked program in Florida State College system according to FLDOE Annual Program Performance Report (APPR).
  - ▶ Tied for 3<sup>rd</sup> among state colleges and universities
- ▶ FLDOE ranked 19 FSW SOE graduates as “high impact” teachers.



## SOE Attracts State and Private Scholarships for future Early Childhood Educators

### The Richard M. Schulze Family Foundation Grant Awards

- ▶ \$150,000 granted to award scholarships for students in the A.S. in Early Childhood Education program.

### T.E.A.C.H. Scholarships

- ▶ 25 students received > \$50,000 in scholarships over the 2016-2017 academic year.







## Accelerated Learning Pathways

**FLORIDA**  
**SOUTHWESTERN**  
COLLEGIATE INSTITUTE  
AT CLEWISTON HIGH SCHOOL

- ▶ 3 Pathways
  - ▶ Early Admittance
  - ▶ Dual Enrollment
  - ▶ Collegiate High Schools and Institutes
- ▶ 3,000 students enrolled in D.E., accounting for approximately 16% of total college enrollment.
- ▶ FSW accounts for 5% of Florida's dual enrollment population.
- ▶ New SACSCOC approved Clewiston High School Collegiate Institute opening Fall 2017
  - > 90% success rate

## Collegiate Charter High Schools

- ▶ **FSWC – Charlotte**
  - ▶ ranked 3<sup>rd</sup> in state by FLDOE in 2017
- ▶ **FSWC – Lee**
  - ▶ ranked 6<sup>th</sup> in state by FLDOE in 2017
  - ▶ Class of '17 offered **\$10 million** in scholarships
  - ▶ earned AdvancED STEM certification
- ▶ Both sites honored as Schools of Excellence by FLDOE in 2017
- ▶ 87% of our graduates earned both high school diploma and an A.A. degree
- ▶ *U.S. News and World Report* ranked both as 'Bronze' High Schools
- ▶ Awarded \$27,000 grant from The Richard M. Schulze Family Foundation to facilitate student-built drones and STEM learning. Applied for an additional \$30,000 in 2018.



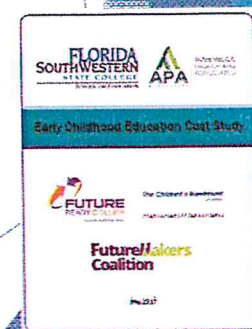
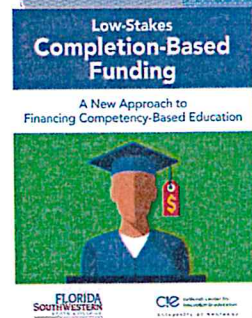
## Education Secretary Betsy DeVos and Rep. Francis Rooney Visited FSWC-Lee Campus

*"Well, Florida is, I think, on the leading edge of providing parents a wide range of choices for their kids," DeVos said. "It's really, I think, instructive to come and help highlight some of the ways that this is happening and to encourage other states to perhaps emulate what Florida is doing in a big way" (The News-Press, 2017).*



## School of Education Research Garners National Attention

- ▶ **Low-Stakes Completion-Based Funding Study**
  - ▶ FSW Researchers found innovative funding model in NH's Virtual Learning Academy Charter School.
  - ▶ Research featured in EdWeek
  - ▶ Presented at Foundation for Excellence in Education
- ▶ **Directed Early Childhood Education Cost Study**
  - ▶ Study sponsors
    - Mrs. Lavern Gaynor
    - Naples Children and Education Foundation
    - The Wayne Smith Family Foundation
    - Richard M. Schulze Family Foundation
    - Lockmiller Endowment for Early Childhood Education
  - ▶ OpEd appeared in *USA Today*
  - ▶ Dr. Larry Miller appeared on local public radio's Gulf Coast Live





## B.S. in Elementary Education Program Professional Development Network

*FSW SOE formalizes MOUs with 15 high schools across the five-county region to enhance teacher preparation.*



## A.S. in Early Childhood Education Program Professional Development Network

### FSW's ECE Professional Development Network

15 centers partner with FSW to provide teacher candidates with professional development.

- |   |   |
|---|---|
| 1. Greater Naples YVCA                      | 6. The Learning Tree                        |
| 2. NICEF Early Childhood Development Center | 9. Harlem Academy                           |
| 3. The Children's Learning Center at FSW    | 10. Gladiolus Learning & Development Center |
| 4. Joseph H. Messina Children's Center      | 11. Wellington Academy                      |
| 5. P.A. Geraci Child Dev. Center            | 12. Lely Elementary                         |
| 6. The Community Children's Center          | 13. Chico's FAS Early Education Center      |
| 7. Oasis Charter Elementary                 | 14. Achievements Learning Center            |
|   | 15. Good Shepherd Preschool                 |







A Proposal to Establish the  
**Center for  
Kindergarten Readiness**

**FLORIDA  
SOUTHWESTERN  
STATE COLLEGE**  
SCHOOL OF EDUCATION

July 2017



The Children's Movement  
of Florida

**FutureMakers  
Coalition**



Early Childhood Education Cost Study



May 2017

To promote public action ensuring kindergarten readiness for all children, we conduct primary public opinion research on the policies we study and use those findings to educate local and state elected officials about taxpayer preferences.

Our policy research findings are disseminated through publications, editorials, and conferences to a local, state, and occasionally, national audience. Our goal is to increase public awareness and understanding of the kindergarten readiness gap and the policy options that can close it.



## Season's Greetings from the FSW School of Education

In alphabetical order: Anne Angstrom, Lisa Betz, Brian Botts, Kelly Buck, Dinu Buran, Bert Cass, Matt Cabañuente, Jenie Clark, Melaine Clinton, Meera Conder, Patricia Caprin, Darbora Covington, Joanne Devine, Katie DeLascio, Mark Farberko, Amber Foster, Joshua Frye, Karen Hathaway, John Holsk, Dale Jamson, Megan Just, Margaret Kemp, Patricia Kirkpatrick, David Koehler, Julia Kroecker, Gina Miller, Larry Miller, Mike Mitchell, Dawn Nolan, Liz Perdomo, Mark Primmack, Kathleen Reilly, Joyce Rotter, Kelly Roy, Blake Schmidt, Caroline Seelchak, Amanda Steik, Jesse Sutton, Lisa Taylor, Christopher Tucker, Mitchell Visale, Greg Wenker



FSWC-Charlotte



Teacher Preparation & Dual Enrollment



FSWC-Lee

Please join us  
for a photo in  
the lobby after  
the meeting.