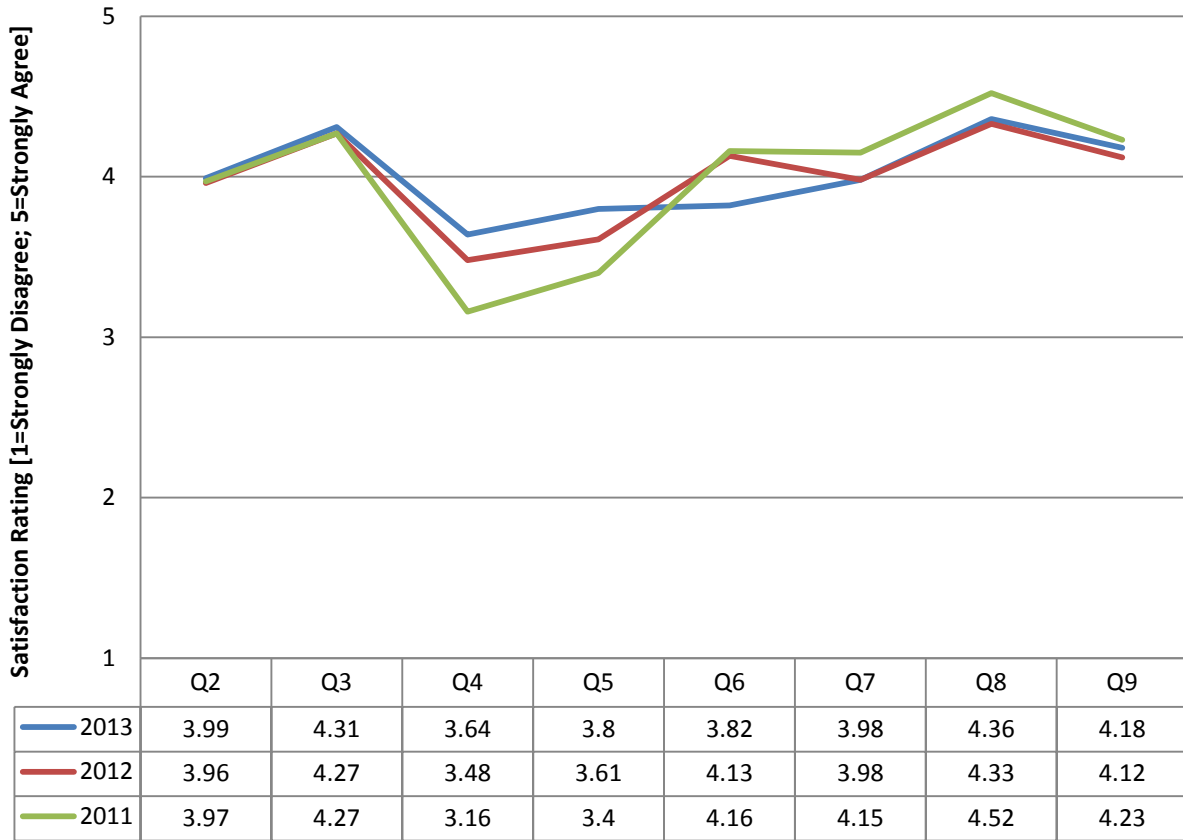


Lee Library Patron Satisfaction Levels 2011-2013



Q1. I am a student at the Lee Campus of Edison State College:

2013: 351 Responses

2012: 263 Responses

2011: 233 Responses

Q2. The Library has sufficient evening and weekend hours.

Q3. The Library should offer extended hours during final exams week.

Q4. The Library has enough space to study.

Q5. The Library is large enough to accommodate students.

Q6. The Library computers are up-to-date and in good working order.

Q7. The Library's website is informative and easy-to-use.

Q8. The Library staff is helpful.

Q9. The Library has sufficient resources, i.e., books, periodicals, databases, etc.