



# Quick 1.3MP WebCam with Night Vision

**Model #: WC1100BLU, WC1200RED  
WC1300BLK, WC1400YLW**



## User's Manual

All brand name and trademarks are the property of their respective owners

## USER'S RECORD:

To provide quality customer service and technical support, it is suggested that you keep the following information as well as your store receipt and this user's manual.

**Date of Purchase:** \_\_\_\_\_

**Model Number:** \_\_\_\_\_

**Product Rev Number (located below the UPC on the package):** \_\_\_\_\_

## FCC RADIATION NORM:

### FCC

This equipment has been tested and found to comply with limits for Class B digital device pursuant to Part 15 of Federal Communications Commission (FCC) rules.

### FCC Compliance Statement

These limits are designed to provide reasonable protection against frequency interference in residential installation. This equipment generates, uses, and can radiate radio frequency energy, and if not installed or used in accordance with the instructions, may cause harmful interference to radio communication. However, there is no guarantee that interference will not occur in television reception, which can be determined by turning the equipment off and on. The user is encouraged to try and correct the interference by one or more of the following measures:

- Reorient or relocate the receiving antenna
- Increase the separation between the equipment and the receiver
- Connect the equipment into an outlet on a circuit different from that to which the receiver is connected to.



### CAUTION!

The Federal Communications Commission warns the user that changes or modifications to the unit not expressly approved by the party responsible for compliance could void the user's authority to operate the equipment.

## **PACKAGE CONTENTS:**

Your new Webcam will ship with the following items.

- Quick 1.3MP WebCam with night vision
- Interpolation Software CD
- User's Manual
- Warranty Information

## **SYSTEM REQUIREMENTS:**

Please be sure that you meet all of the system requirements below to avoid difficulties during installation.

- 100% PC Compatibles
- Windows® XP, Vista and 7
- An Available USB Port
- CD-ROM Drive (for software installation)

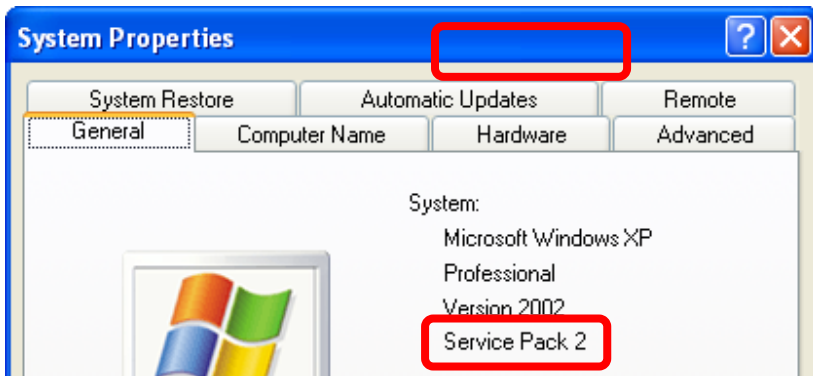
## PRIOR TO INSTALLATION:

### For Windows® Vista

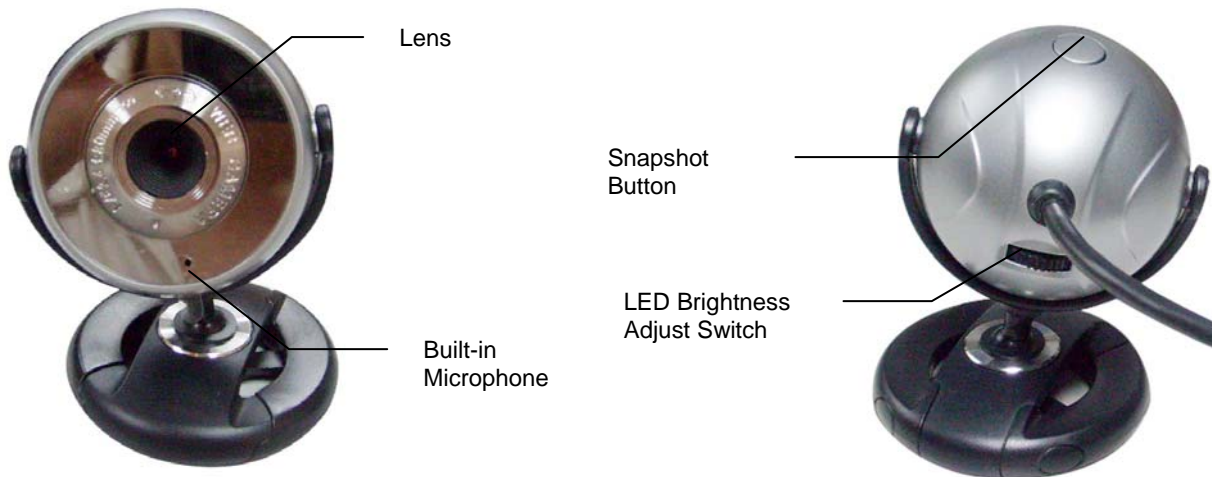
To avoid any hardware conflict and/or error, please visit [www.windowsupdate.com](http://www.windowsupdate.com) and install the most recent updates for your operating system. Please also visit your motherboard manufacturer's website and install the most recent updates available for your video and sound card.

### For Windows® XP

Windows® XP users are recommended to have **Service Pack 2**. You can determine if you have **Service Pack 2** by right-clicking "**My Computer**", and then selecting "**Properties**". The Service Pack you have will be listed under "**System**". If **Service Pack 2** is not listed, please visit [www.windowsupdate.com](http://www.windowsupdate.com) and install it.



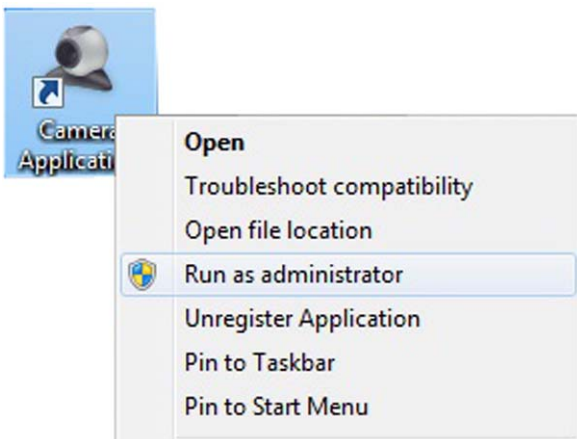
## HARDWARE DESCRIPTION:



## INSTALLATION:

1. Turn on your computer.
2. Plug the USB connector of your Webcam into an available USB 2.0 port on your computer. (**NOTE:** The webcam driver can not be installed if the webcam is not connected to your computer.)
3. Insert the enclosed Software CD into the CD-ROM drive of your computer.
4. The Webcam Driver will start automatically. If it does not start automatically, please click **"Start"**, then **"Run..."**, type **"D:\Setup.exe"** into the dialog box. (**NOTE:** **"D:"** represents the drive letter assigned to the CD-ROM drive you are using. If **D** is not the letter assigned to your CD-ROM drive, please replace **D** with the appropriate drive letter). Then click **"OK"**.
5. The **"USB Webcam – InstallShield Wizard"** will appear on the desktop.
6. Select your preferred language.
7. Follow the on-screen instructions to finish the installation. Please restart your computer after the installation is finished.
8. You will find the **"WEBCAM Driver"** icon on your desktop.
9. Your webcam is now ready to be used.


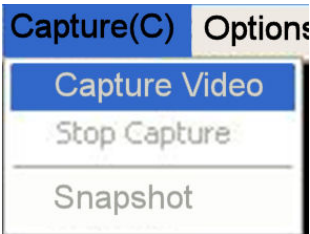
**NOTE:** For Windows® Vista and 7 users, please run the **Camera Application** software as administrator for the first time.





## CAMERA APPLICATION

Using the toolbar at the top of the **Camera Application** window, you can access the settings of the **Camera Application** software:

<b>File</b>	<b>Exit</b>	Select this option to exit the Camera Application software.	
<b>Devices</b>	<b>Device Name</b> <i>(depending on your system configuration)</i>	This section lists all connected video/audio capture device(s) on your computer ( <b>NOTE:</b> Please note that you must select a video capture device and an audio capture device before you can use your Webcam with Camera Application).  If you have multiple video/audio devices and want to change the device(s) for video/audio capturing with Camera Application, select to check the device(s) on the list.	
<b>Capture</b>	<b>Capture Video</b>	Click this selection, the “ <b>Save as</b> ” window will pop out, set a name for the video file and choose a location to store it, click “ <b>Save</b> ” at the bottom of the “ <b>Save as</b> ” window, your webcam will start to record video.	
	<b>Stop Capture</b>	Click to stop recording video.	
	<b>Snapshot</b>	Click to take a snapshot. The picture of the snapshot will show on the screen in JPG format and be stored in a specified location.	
<b>Options</b>	Under the Options Drop down menu, Various settings for the camera can be adjusted. The options on the right are the more commonly used options	<b>Output Size</b>	You can define the size of the Camera Application screen by choosing from the drop-down menu.
		<b>Capture Size</b>	You can define the size of the captured image by choosing from the drop-down menu.
		<b>Mirror</b>	You can choose to flip the image shown in the screen horizontally or vertically.
		<b>Zoom</b>	Choose to zoom in 1x, 2x, 3x or 4x
		<b>Avoid Flicker</b>	Choose the output frequency between 50 Hz and 60 Hz.
		<b>Picture Place</b>	Choose the location to store your captured pictures.
		<b>Video Setting</b>	In this window, you can adjust the following parameters for the video file captured: Brightness, Contrast, Hue, Saturation, Gamma, Backlight Comp.
		<b>Effect-Frame Type</b>	You can select a frame for the Camera Application screen from the drop-down menu. .
		<b>Effect-Mosaic Setting</b>	Adjust the mosaic effect for the image previewed on the Camera Application screen.
		<b>Effect-Letter Out</b>	Write in the blank area and these words will appear on the left top of the Camera Application screen.
<b>Camera Control - Exposure</b>	Adjust the brightness of the Camera Application.		
<b>Camera Control - Roll</b>	Roll the image shown in the Camera Application.		

## TROUBLESHOOTING:

Problem	Solutions
1. The Webcam shows no image after you have connected it to your computer.	<ul style="list-style-type: none"> <li>- Make sure you have installed the drivers for your Webcam following the procedures listed in the <b>Installation</b> section in this manual.</li> <li>- Make sure the USB connector for your Webcam is properly and securely connected to an available USB 2.0 port on your computer.</li> <li>- If the problem still occurs; exit the included software (or the application you are attempting to use with your Webcam), re-connect your Webcam to your computer, and then start the included software again (or the application you are attempting to use with your Webcam).</li> </ul>
2. The captured video (or the snapshot) is blurred.	<ul style="list-style-type: none"> <li>- Make sure your Webcam is placed on a flat and stable surface while you are using it. Moving your Webcam while in use may influence the operation of the lens in your Webcam.</li> <li>- Check if there is anything on your Webcams lens; if yes, clean the lens with a soft dry cloth.</li> <li>- If the problem still occurs; you may fine-tune the image color and quality by going into <b>Options &gt; Properties</b> in the Camera Application software.</li> </ul>
3. The video images turn slow when viewing in high resolution mode.	<ul style="list-style-type: none"> <li>- When using your Webcam in high resolution mode, the volume of transmission data will be larger and may affect the overall performance of your system including real-time video streaming. In this case, we recommend you to upgrade the hardware of your system; or, use your Webcam in a lower resolution mode.</li> </ul>
4. There are strips or black shadows on the video images.	<ul style="list-style-type: none"> <li>- Make sure you are using the optimal resolutions and color settings for your monitor display. If you are not sure, please refer to the User's Manual of your monitor display for more information.</li> <li>- If the problem still occurs; set the monitor display color to <b>24-bits</b> or <b>32-bits True Color</b>, and then try again.</li> </ul>
5. While using various instant messaging programs (e.g. Windows <sup>®</sup> Messenger), image and/or sound are/is missing.	<ul style="list-style-type: none"> <li>- Make sure you have tried the solutions mentioned from Problem 1 earlier in this section.</li> <li>- If the problem still occurs; please check and make sure that you have properly configured the video and audio sources that you are attempting to use with your Webcam.</li> </ul>





## WARRANTY INFORMATION:



Gear Head, LLC warrants that this product shall be free from defects in materials and workmanship for the reasonable lifetime of the product. If the product is defective, Gear Head, LLC's sole obligation under this warranty shall be at its election, subject to the terms of this warranty, to repair or replace any parts deemed defective. This warranty is for the exclusive benefit of the original purchaser and is not assignable or transferable. THIS WARRANTY IS MADE IN LIEU OF ALL OTHER WARRANTIES, EXPRESS OR IMPLIED, AND ANY IMPLIED WARRANTIES, INCLUDING THE IMPLIED WARRANTIES OF MERCHANTABILITY AND FITNESS FOR A PARTICULAR PURPOSE, ARE LIMITED TO THE TERMS OF THIS WARRANTY, UNLESS OTHERWISE PROHIBITED BY LAW.

### Exclusions

To the fullest extent permitted by law, Gear Head, LLC expressly disclaims and excludes from this warranty any liability for damages, including but not limited to general, special, indirect, incidental, consequential, aggravated, punitive or exemplary damages, and economic loss (even if Gear Head™ is informed of their possibility), third party claims against you, including for any loss or damages, and claims or damages related to loss of, or, damage to, your records or data. This warranty does not apply to any product the exterior of which has been damaged or defaced. This warranty will be voided by misuse, improper physical environment, improper repair, acts of God, war or terror, commercial use, and improper service, operation or handling.

### Technical Support

Please access Technical Support on the web or contact our technicians at [info@pcgearhead.com](mailto:info@pcgearhead.com) for help.

[www.pcgearhead.com](http://www.pcgearhead.com)

Gear Head™ provides phone support, 866-890-7115, Monday - Friday from 9:00 am – 5:30 pm Eastern Time. Before calling, please make sure you have available the Model # (located on the front page of your User's Manual) and information regarding your computer's operating system.

### Return Merchandise for Service

Any claim under this warranty must be made in writing to Gear Head, LLC, within 30 days after the owner discovers the circumstances giving rise to any such claim, and must include a copy of this warranty document, a receipt or copy of your invoice marked with the date of purchase, and the original packaging. You may contact us on the web at [www.pcgearhead.com](http://www.pcgearhead.com) or by emailing us at [info@pcgearhead.com](mailto:info@pcgearhead.com) to receive service or request a return service authorization.